

***A LIGHTLY MOVING
THINNING MACHINE***

FLX

PONSSE



PONSSE FOX

A SPECIALIST IN THINNING AND SOFT TERRAIN

The **PONSSE Fox** harvester is a fuel-efficient and powerful combination of state-of-the-art technology and reliable solutions. Its driving forces are a precise and powerful crane, good visibility, machine stability and low surface pressure for demanding conditions and soft terrain.



PONSSE FOX

The lightly moving PONSSE Fox feels at home at thinning sites and in soft terrain.

The high-performance engine gives the necessary power, and the strong hydraulic-cylinder frame oscillation lock and high tractive force make Fox a stable machine capable of extremely high propulsion. The most distinctive strength of Fox is the solid, reliable and easy-to-use PONSSE C44+ parallel crane, which is located in the center of the machine. The strong and easy-to-use crane is located close to the cabin to ensure excellent visibility over the working area. The crane's high efficiency ratio enables excellent fuel economy and high productivity.

CABIN AND CONTROL SYSTEM

The most spacious and comfortable cabin and the most ergonomic controls in the market guarantee the best working comfort. The PONSSE Opti information system is an advanced and easy-to-use interface for machine and work management.

ENGINE AND HYDRAULICS

Fox's unrivalled power comes from its mighty engine, the large 210 cm³ work pump and high-efficiency hydraulics. Combined, these offer smooth-running power with low fuel consumption.

FRAME STRUCTURES AND FRAME OSCILLATION LOCK

The design of the Fox frame focuses particularly on durability and ease of maintenance. The reliable frame oscillation lock equipped with hydraulic cylinders is solid and acts as a shock absorber when driving. The narrow frame structure always enables the use of proper track equipment.

EIGHT WHEELS

With its eight wheels, Fox is ideal for all kinds of sites. Its excellent stability and low surface pressure enable efficiency in demanding conditions and soft terrain. Fox's 26.5" wheel size, combined with the narrow frame structure, provides excellent propulsion and ground clearance, even in difficult terrain.

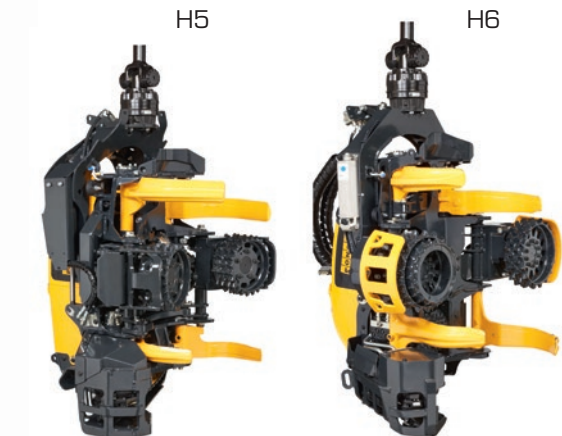


CRANE

The PONSSE C44+ parallel crane, with parallel action, uses hydraulics instead of mechanical leverage. This is why the crane is fuel-efficient and powerful and requires less maintenance. Ponsse designs and manufactures all of its crane models for high-quality and well-functioning crane-base machine combinations.

HARVESTER HEADS

PONSSE harvester heads are known for their high efficiency/weight ratios and robust structure, which are second to none. A broad harvester head range is available for Fox: choose the small and feisty H5 for thinning-based harvesting or the light and efficient H6 as an all-round grapple for larger logging sites.



CABIN

WORKPLACE WITH A VIEW

The Fox has no obstacles to productivity in sight.

The PONSSE Fox cabin is your vantage point to the latest in forest machine technology. It is a work environment for professionals who value comfort, safety and ergonomics.

The control devices are the best you will find in forest machines in terms of their ergonomics. The large cabin, expansive windows and thin window pillars ensure excellent visibility in all directions.

Optionally the cabin can also be equipped with the best forest machine seat in the world, PONSSE Seat.



PONSSE SEAT*

UNBEATABLE COMFORT

THE ONLY SEAT ON THE MARKET SPECIALLY DESIGNED FOR FOREST MACHINE DRIVERS.

COMFORT ABOVE ALL ELSE.

The breathable fabric and ergonomic seat supports, guarantee improved working comfort.

DURABLE AND EASILY MAINTAINABLE FABRIC.

Seat fabric is especially durable and the dirt repellent surface makes cleaning effortless.



DURABLE AND STABLE BASE.

A strong base provides the seat with superior reliability and stability. Thanks to the suspension specifically designed for forest machines, the PONSSE Seat effectively decreases swinging and impacts towards the operator.

EASY ACCESS TO SEAT CONTROLS AND BASE.

All adjustment controls are conveniently located at the front of the seat cushion. The removable cushion gives easy access to the seat base for maintenance.

* PONSSE Seat is available as option to all PONSSE machines.



**ACTIVE
CARE**

LESS SERVICE, MORE OPERATION

The technology and hydraulics offer longer service intervals, increasing effective operating hours and reducing operating costs. Easy access to important components speeds up maintenance. In all PONSSE models special attention has been put into the positioning of components and service points, as well as the ease of maintenance, as requested by our customers.

ENSURE MAXIMUM PRODUCTIVITY PONSSE

Active Care service agreements offer the best possible service for forest machine entrepreneurs. You can focus on your logging, while Ponsse will make sure that the machine will maintain its performance and productivity from one logging site to the next. With the PONSSE Active Care service agreement, you can outsource the scheduled maintenance of your forest machine to Ponsse. Machines are maintained regularly by our professionals using only high-quality and original PONSSE parts, lubricants and filters to keep the machines in good operating condition to retain its value.



MERCEDES-BENZ ENGINES

CLEANER AND MORE EFFICIENT

Explosive power and increased torque. Lower emission level and fuel consumption.

The new Mercedes-Benz/MTU STAGE V emission engines are efficient and economical. The torque has been increased, and maximum torque can be reached at lower engine speeds.

The Mercedes-Benz/MTU STAGE V emission engines are modern, emission engines with significantly lower particulate matter (PM) and nitrogen oxide (NOx) emissions compared to engines of the previous emission levels (STAGE III and IV). In addition to particulate matter, the STAGE V engines also now control particulate volume with a particulate filter (DPF).

Outside Europe a Tier 4F or Stage III level Mercedes-Benz engines are used depending on market specific emission requirements.

Our goal is to manufacture the most productive and economical forest machines on the market. We call this the PONSSE Boost/Save operating model.

At Ponsse, we have always put the customers first.

For decades now, we have been developing the world's best cut-to-length forest machines as well as related services and information systems. The users of the machines are the best specialists in their field, and we closely listen to their feedback. Together, we have managed to continue increasing the productivity and efficiency of harvesting and reduce the costs. This has been the result of long-term collaboration. However, we want to serve our customers even better.

Boost/Save means even more efficient products and better services for our customers. It means efficient and productive machines, agile product development, thorough training, comprehensive maintenance, original spare parts and the most modern information systems in the field.

Boost/Save means efficient and productive harvesting!

PONSSE BOOST/SAVE ***POWER AND SAVINGS***



PONSSE MANAGER ***REAL-TIME MANAGEMENT***

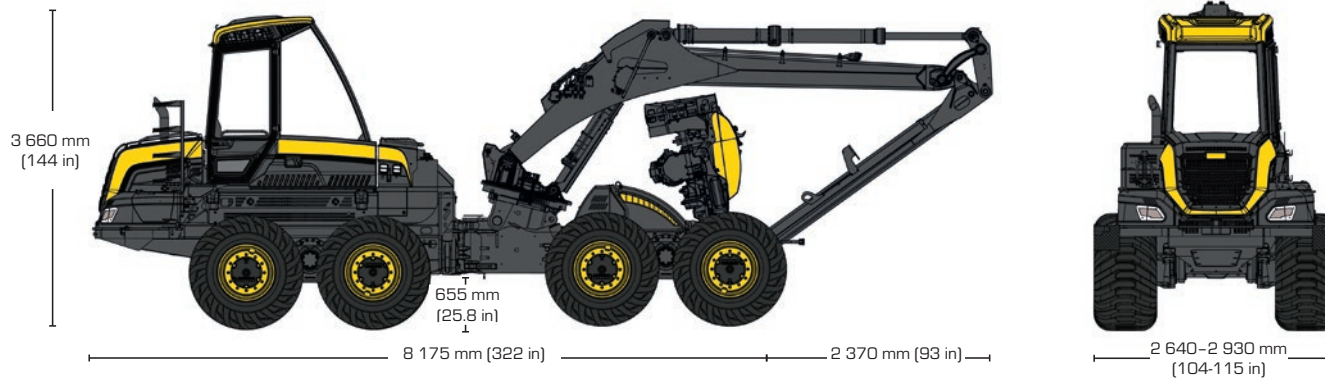
PONSSE Manager connects forest machines to an information network.

PONSSE Manager, the modern digitalization platform for forest machines, enables comprehensive services now and in the future. The easy-to-use tool offers assistance in harvesting equipment maintenance and work planning, along with providing access to functional and extensive reporting.

PONSSE Manager provides real-time information on equipment performance and work site status. The solution can be easily used via a smartphone, tablet or computer.



PONSSE FOX



DIMENSIONS

Length:	8 175 mm (322 in)
Width:	2 640 - 2 930 mm (104-115 in)
Transportation height:	3 660 mm (144 in)
Minimum weight:	19 200 kg (42,329 lbs)
Typical weight:	20 200 kg (44,533 lbs)
Ground clearance:	655 mm (25.8 in)

ENGINE

Model:	Mercedes-Benz/MTU OM 934 LA Stage V/Tier 4 Final or Mercedes-Benz/MTU OM 924 LA EU Stage IIIA
Power:	Stage V and Tier 4F: 150 kW (204 hp) Stage IIIA: 145 kW (197 hp)
Torque:	1 200–1 600 rpm (Stage V: 850 Nm, Tier 4F: 800 Nm, Stage IIIA: 705 Nm)
Tractive force:	175 kN (39,341 lbf)
Fuel tank:	300 l (79.2 gal US)

TYRES

Front and rear:	600/55-26,5" / 710/45-26,5"
-----------------	-----------------------------

HYDRAULICS

Control system:	PONSSE OptiControl
Working pump:	210 cm ³ (12.8 cu in)
Hydraulic oil tank volume:	170 l (45 gal US)

CRANE

PONSSE C44+

Reach:	10/11 m (33/36 ft)
Lifting torque:	230 kNm
Slewing torque:	52 kNm
Turning angle:	250°
Base tilt angle:	±15°

HARVESTER HEAD

Model:	PONSSE H5 PONSSE H6
--------	------------------------

Plenty of optional equipment is available in addition to the comprehensive PONSSE Fox standard equipment. Consult your nearest Ponsse sales department or dealer for more information on the standard and optional equipment.



Ponsse Plc.

Ponssentie 22
74200 Vieremä
FINLAND
Tel.: +358 20 768 800
Fax: +358 20 768 8690
www.ponsse.com

Ponsse UK Ltd.

4 Annan Business Park
Annan
Dumfriesshire
DG12 6TZ
UNITED KINGDOM
Tel. + 44 1461 207 510

Ponsse Machines Ireland Ltd

Cappakeel, Emo
Portlaoise
R32NN28
Laois
IRELAND
Tel. +353 57 863 3762

Ponsse North America, Inc.

4400 International Lane
Rhineland, WI 54501
USA
Tel. +1 715 369 4833
Fax +1 715 369 4838



A logger's best friend
www.ponsse.com